

Supplementary Materials

Morphology and Oxidation State Dependent Glucose Sensing Properties of Cu-Oxide Nanocrystals

Carla Jacobs and Elizabeth Erasmus*

Department of Chemistry, University of the Free State, Bloemfontein 9300, South Africa

*Corresponding Author, Tel.: +27-514019656

E-Mail: erasmuse@ufs.ac.za

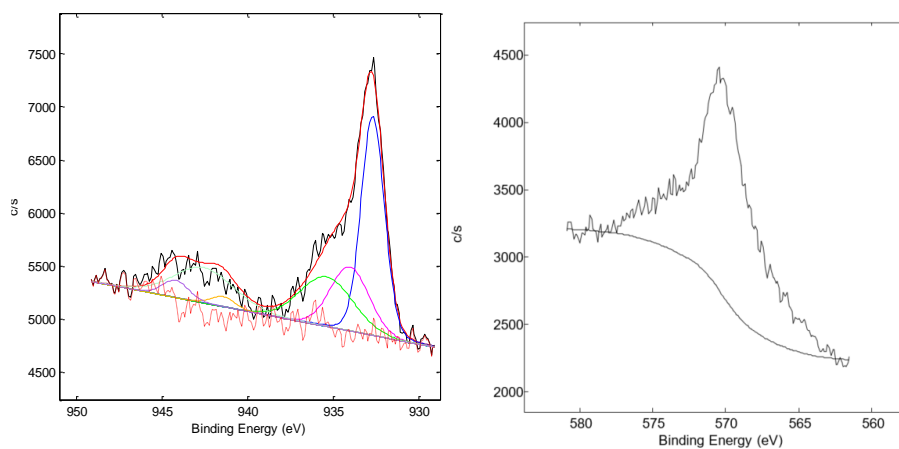


Figure S1. Left: XPS spectra of the Cu 2p_{3/2} area of **2**. Right: The Cu LMM Auger line of **2**

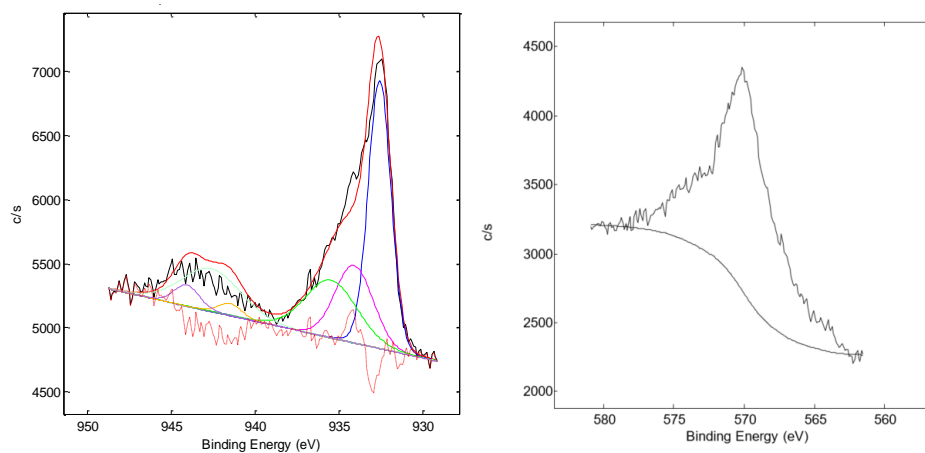


Figure S2. Left: XPS spectra of the Cu 2p_{3/2} area of **3**. Right: The Cu LMM Auger line of **3**

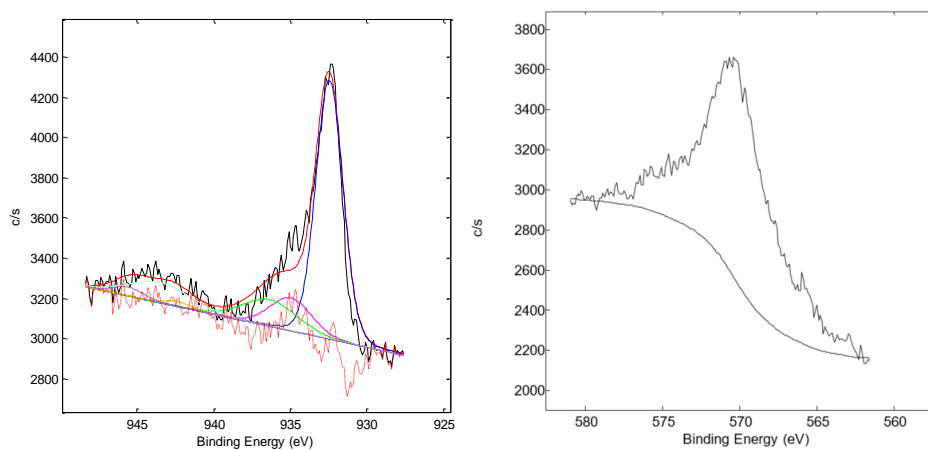


Figure S3. Left: XPS spectra of the Cu 2p_{3/2} area of **4**. Right: The Cu LMM Auger line of **4**

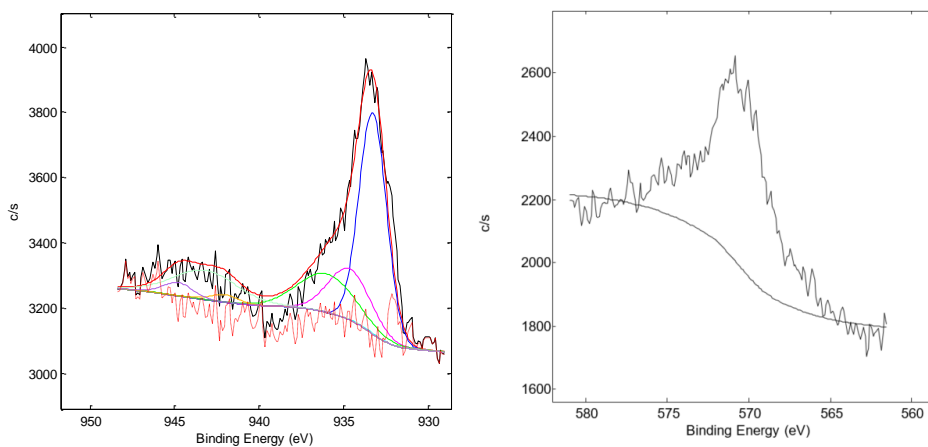


Figure S4. Left: XPS spectra of the Cu 2p_{3/2} area of **5**. Right: The Cu LMM Auger line of **5**

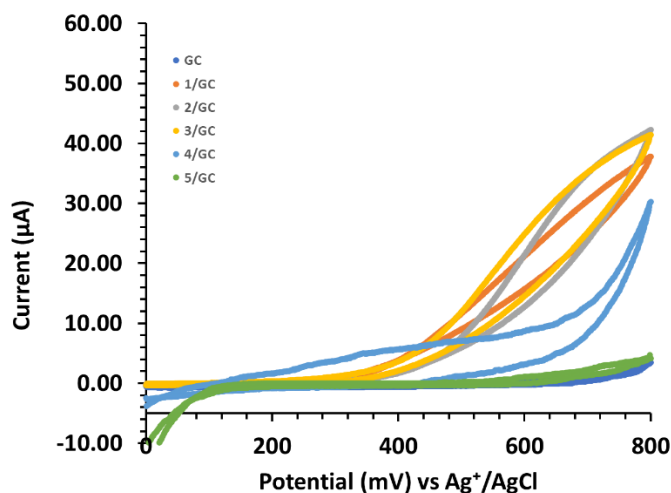


Figure S5. The CV curves of **1-5/GC** in a 0.1 M NaOH solution containing in the absence of glucose, measured at a scan rate of 20 mV s⁻¹

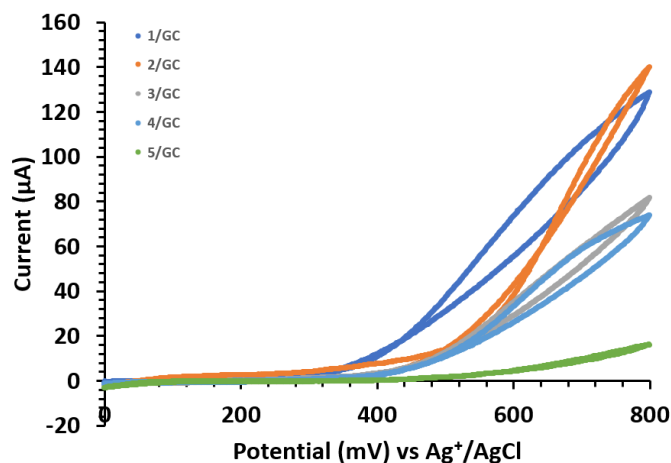


Figure S6. The CV curves of **1-5/GC** in a 0.1 M NaOH solution containing 0.01M glucose, measured at a scan rate of 20 mV s⁻¹

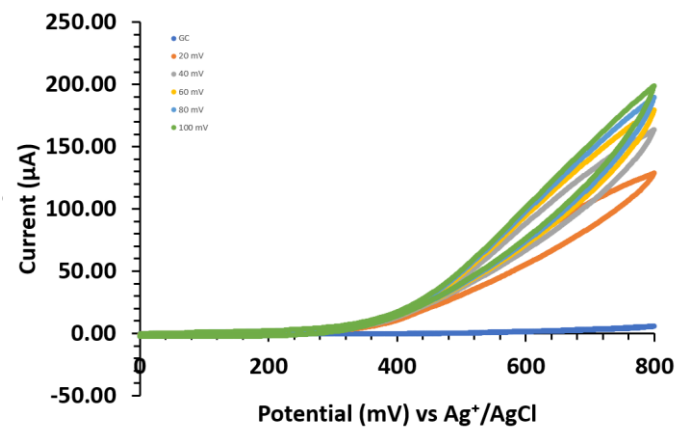


Figure S7. The CV curves of **1/GC** in a 0.1 M NaOH solution containing 0.01 M glucose, measured at different scan rates of 20, 40, 60, 80 and 100 mV s⁻¹

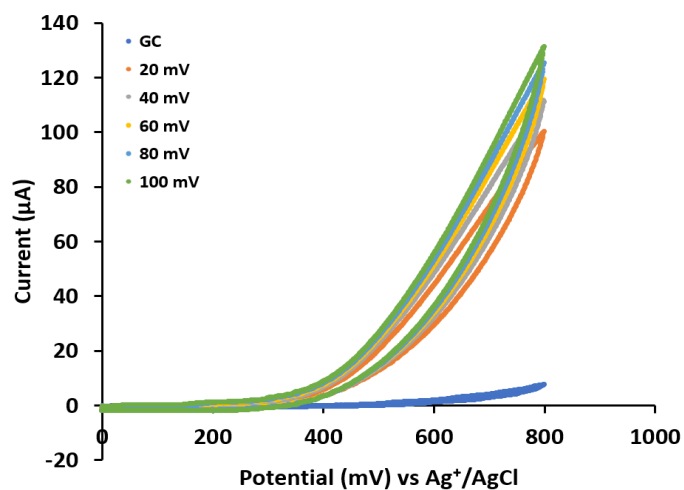


Figure S8. The CV curves of **1/GC** in a 0.1 M NaOH solution containing 0.1 M glucose, measured at different scan rates of 20, 40, 60, 80 and 100 mV s⁻¹

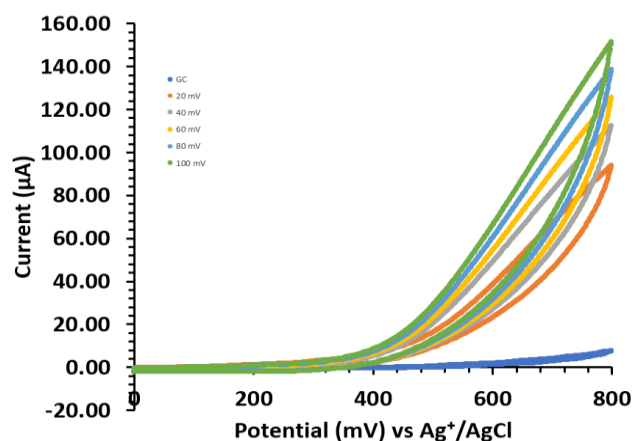


Figure S9. The CV curves of **3/GC** in a 0.1 M NaOH solution containing 0.1 M glucose, measured at different scan rates of 20, 40, 60, 80 and 100 mV s⁻¹

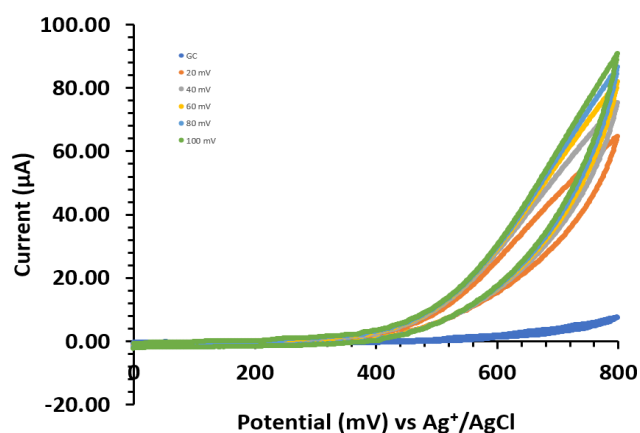


Figure S10. The CV curves of **4/GC** in a 0.1 M NaOH solution containing 0.1 M glucose, measured at different scan rates of 20, 40, 60, 80 and 100 mV s⁻¹

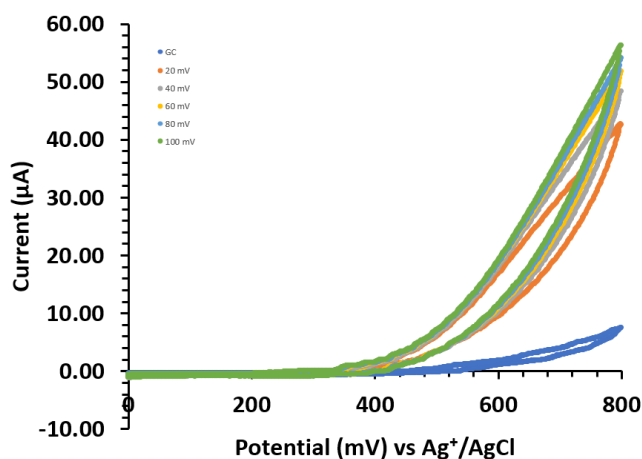


Figure S11. The CV curves of **5/GC** in a 0.1 M NaOH solution containing 0.1 M glucose, measured at different scan rates of 20, 40, 60, 80 and 100 mV s⁻¹

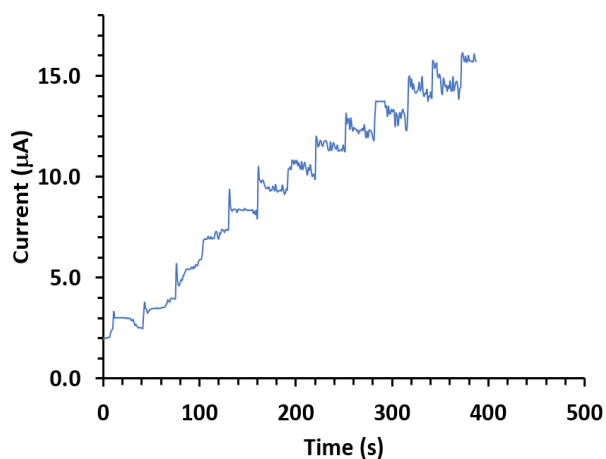


Figure S12. The amperometric response of the **2/GC** electrode at 550 mV with the successive addition of 50 μl 0.1 M glucose to a 0.1 M NaOH solution every 30 s

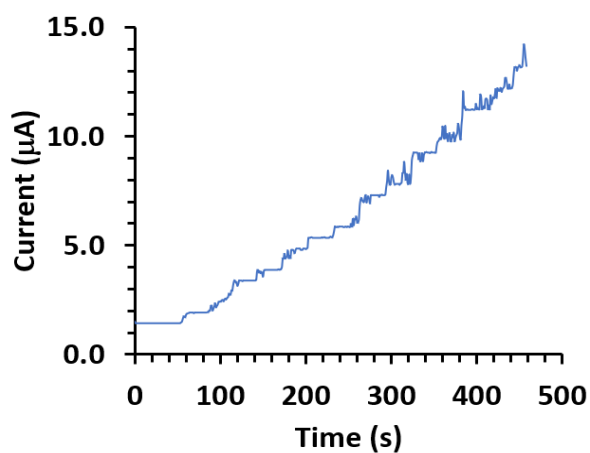


Figure S13. The amperometric response of the **3/GC** electrode at 550 mV with the successive addition of 50 μl 0.1 M glucose to a 0.1 M NaOH solution every 30 s

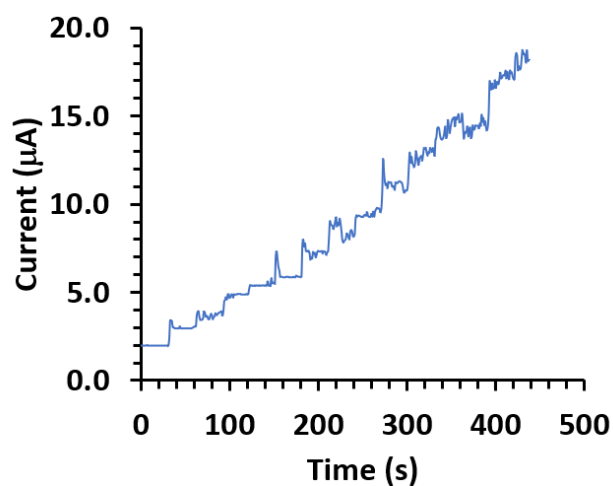


Figure S14. The amperometric response of the 4/GC electrode at 550 mV with the successive addition of 50 μl 0.1 M glucose to a 0.1M NaOH solution every 30 s

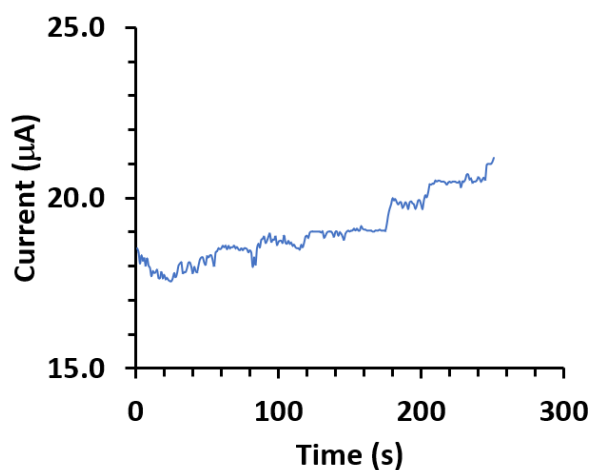


Figure S15. The amperometric response of the 5/GC electrode at 550 mV with the successive addition of 50 μl 0.1 M glucose to a 0.1M NaOH solution every 30 s